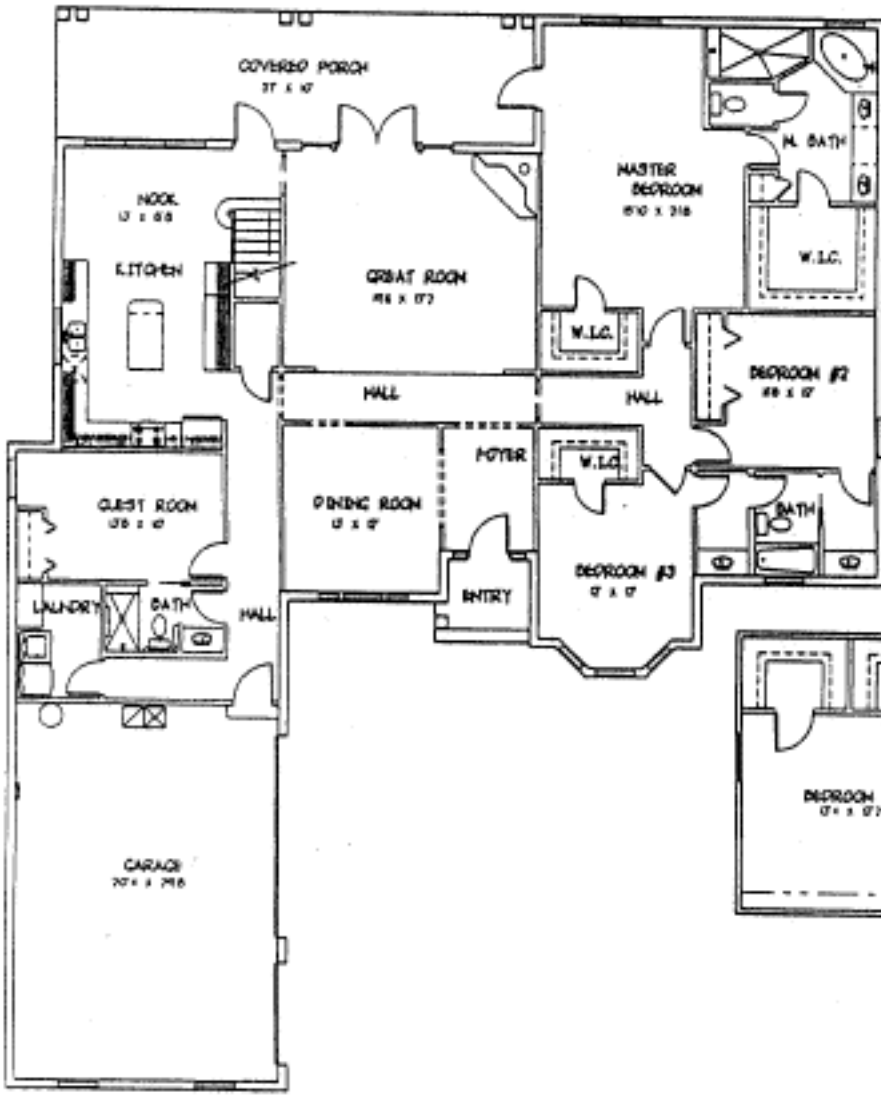
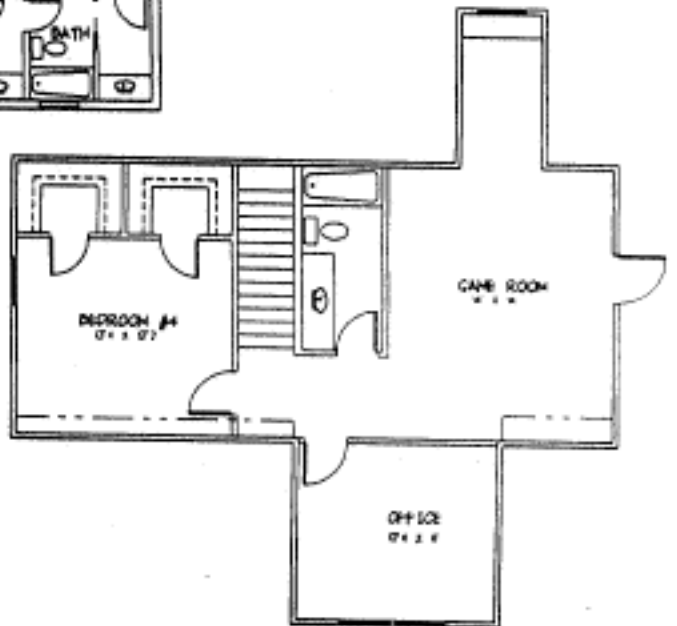


THE MARY ELISABETH



LIVING (1 ST LEVEL)	2814
LIVING (2 ND LEVEL)	829
GARAGE	657
LANAI	370
ENTRY	36
TOTAL	4706



*H*ICKMAN HOMES

"HOMES OF DISTINCTION"

(863) 646-1166

WWW.HICKMANHOMES.NET

"Go Green" This document printed on recycled paper.